

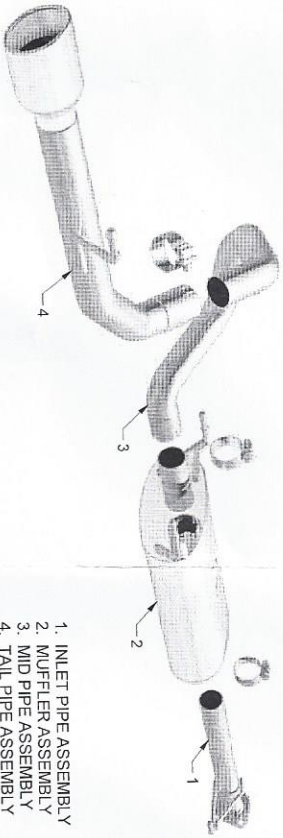


INSTALLATION INSTRUCTIONS

2012-2016 TOYOTA 4-RUNNER V6 4.0L | PART NO. 15145



BILL OF MATERIALS:



1. INLET PIPE ASSEMBLY
2. MUFFLER ASSEMBLY
3. MID PIPE ASSEMBLY
4. TAIL PIPE ASSEMBLY

SHOP SUPPLIES:



WEAR SAFETY GLASSES



READ INSTRUCTIONS THOROUGHLY BEFORE INSTALLING PRODUCT



SPRAY LUBRICANT

To ease removal of existing exhaust components (especially on older vehicles), spray penetrating lubricant on all fasteners and hangers/insulators that will be loosened or removed and let soak before disassembly.

MINIMUM REQUIRED TOOLS:



Pry Bar



14mm Socket



15mm Socket

HARDWARE KIT:

1. [3] 2.50" Clamps

MAGNAFLOW RECOMMENDS PROFESSIONAL INSTALLATION ON ALL THEIR PRODUCTS

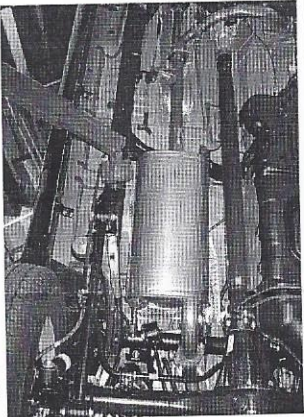
WARNING: When working on, under, or around any vehicle exercise caution. Please allow the vehicle's exhaust system to cool before removal, as exhaust system temperatures may cause severe burns. If working without a lift always consult vehicle manual for correct lifting specifications. Always wear safety glasses and ensure a safe work area. Serious injury or death could occur if safety measures are not followed.

ATTENTION: Always install any supplied band or U-bolt clamps to the proper torque specifications of 40-45 lbs for band clamps and 30-35 lbs for U-bolt clamps. Over tightening will result in the clamp breaking and will NOT be warranted by Magnaflow.

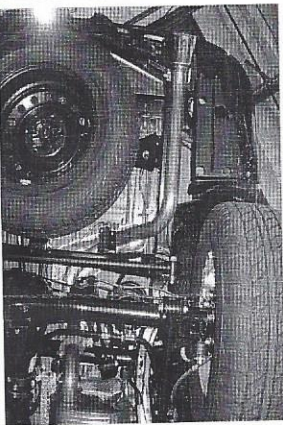
MAGNAFLOW: 22961 Arroyo Vista - Rancho Santa Margarita, CA 92688 | (800) 990-0905
Technical Support: (800) 959-9226 | Email: moreinfo@magnaflow.com

15145 9/26/14 REV 000

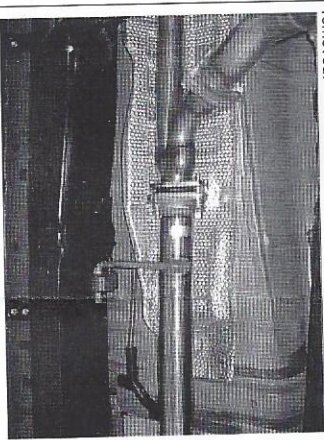
INSTALLATION INSTRUCTIONS



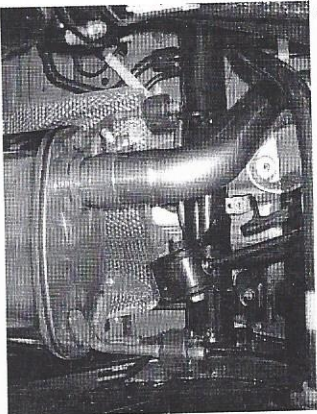
Step 1. Begin removing the OEM exhaust by unbolting the spring loaded coupling flange at the outlet of the OEM Y-pipe that attaches to the muffler inlet with a 14mm socket.



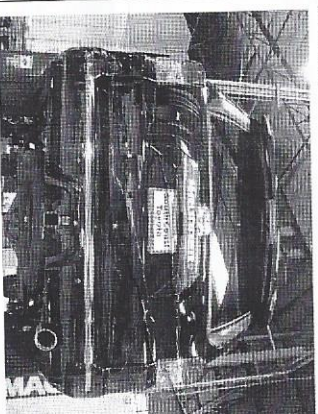
Step 2. Next unbolt the outlet of the OEM muffler at the inlet of the tail pipe assembly. Remove the welded hangers from the rubber insulators using a pry bar. Do not discard or damage the insulators as they will be needed to install your new system. The OEM system may now be removed.



Step 3. You are now ready to install your new MAGNAFLOW system. Attach the Inlet Pipe Assembly to the OEM Y-pipe outlet using the existing hardware. Engage the welded hanger to the OEM rubber insulator. Leave all clamps and hardware loose for final adjustment of the complete system.



Step 4. Slip the inlet of the Muffler Assembly over the outlet of the Inlet Pipe Assembly and loosely secure using the supplied 2.50" clamp and 15mm socket. Engage all welded hangers to the OEM rubber insulators. Install the Mid Pipe and the Tail Pipe Assembly using a similar procedure.



Step 5. Once a final position has been chosen for the new system, evenly tighten all fasteners from front to rear using the torque specifications on page one of this document. Inspect all fasteners after 25-50 miles of operation and retighten if necessary.

MAGNAFLOW: 22961 Arroyo Vista - Rancho Santa Margarita, CA 92688 | (800) 990-0905
Technical Support: (800) 959-9226 | Email: moreinfo@magnaflow.com

15145 9/26/14 REV 000